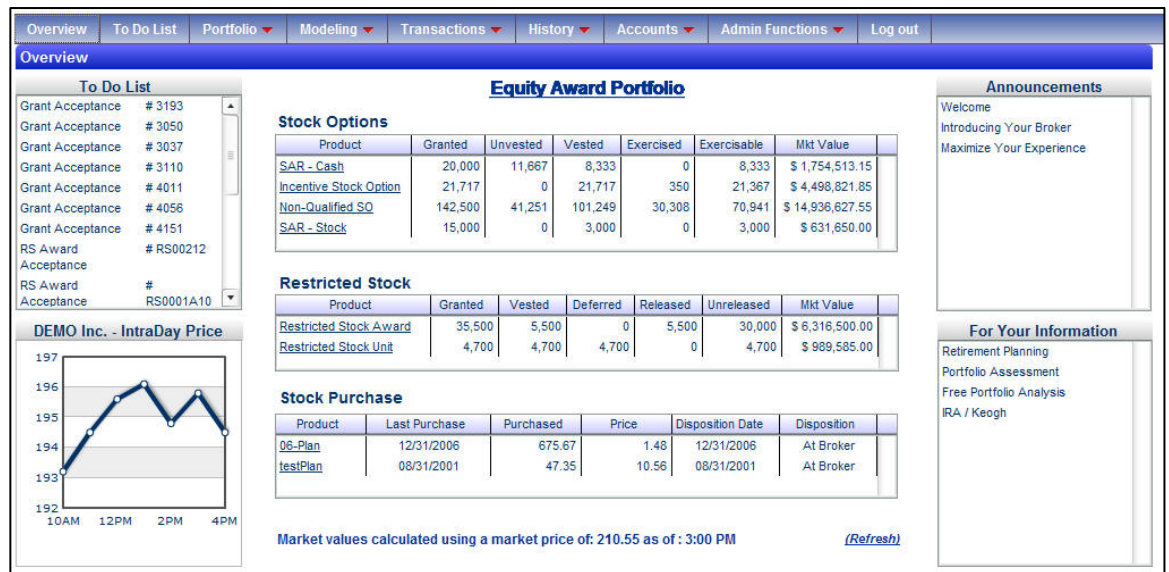


Power of the Web For your Employees

wealth|central



Power of the Web

Your Portal, Your Way

- 24x7 access to all plan information
 - All position information
 - On-line grant acceptance, tax election, plan enrollment and contribution election
 - All plan and grant documents are available for downloading
 - E-mail notification of important plan information such as new grants, option expiration, enrollment periods, etc.
 - Modeling, including tax liability and your FMV
 - Targeted messaging allows you to speak directly to the participants
 - Single sign-on available directly from your intranet
 - Administrator and participant have access to the same views at the same time.
 - Full call center support module
 - On-line exercises available
 - Full support for IRC 701 disclosure and
- Self Service
 - You define the message
 - You define the layout
 - Your name and logos are the only ones presented

For more information on wealth|central or any of our other equity compensation products and services,

please e-mail us at: sales@missionmpower.com,

call us at 973.313.0012

or visit us on the Web at www.missionmpower.com.



Hosted

- We host the portal at our SAS-70 type II certified datacenter.

Change of Control

- No portal conversion needed when you go public, just add brokerage.
 - No need for participant retraining
 - No need for major plan conversion
 - Work with any broker you choose
 - Work with as many brokers as you choose

Seamless Integration

- Open Architecture
 - Works with your current administration software
 - Works with your current outsourcing agent
 - No need for time consuming and expensive conversion

POWER OF SUPPORT

Mission Mpower can support your efforts in many ways. Through our complete network of trusted partners, we can offer:

- 10b5-1 plan support, including contracting, execution and SEC reporting
- Full SAS-70 supported stock plan administration
- Platform hosting
- Technology administration
- Plan implementation
- Participant training
- Call Center support
- Custom requirements

